

TWLi20



Max Load Capacity
4000 lbs
(1814 kg)

CLARK



CLARK Power

CLARK presents the TWLi20 three-wheel electric lift truck with integrated lithium ion battery to its fleet. Designed for productivity and operator comfort, along with all of the benefits of Li-Ion technology, the truck readily meets the needs of its customers.

CONVENIENCE

The TWLi20 showcases the convenience that comes with having a fully integrated Li-Ion battery:

- No battery maintenance is required
- No battery watering is required
- No battery change outs are required
- Able to opportunity charge 7% in as little as 10 minutes
- Lasts over 1,000 cycles longer than a typical lead acid battery

PRODUCTIVITY

Today's working environments demand a lift truck able to do more, and Li-Ion technology delivers by:

- Saving time from changing out batteries up to two times per shift
- Eliminating the need to continuously water, monitor and maintain a battery
- Promoting opportunity charging throughout the day – with no loss of battery life

EFFICIENCY

CLARK Li-Ion brings with it massive benefits to the efficiency of your application:

- Lithium-ion batteries provide up to 50% more energy and they provide more power than lead-acid batteries
- Lithium-ion batteries maintain a more constant voltage while discharging, providing more usable energy
- Lithium-ion batteries have a longer service life than lead acid batteries, which means less batteries to buy



TWLi20

Remember: Safety Starts With You!

- Before operating a lift truck, an operator must:
- Be trained and authorized
 - Read and understand operator's manual
 - Have the overhead guard and load backrest extension in place
 - Perform daily inspections
 - Not operate a faulty lift truck
 - Not repair a lift truck unless trained and authorized

- During operation, a lift truck operator must:
- Wear a seat belt
 - Keep entire body inside the truck's operator compartment

- Travel at a safe speed
- Travel with forks and/or attachments as low as possible and tilted back
- Allow safe stopping distance
- Come to a complete stop before leaving operator compartment
- Never carry passengers or lift people

- To park a lift truck, an operator must:
- Ensure the lift truck is on a level surface
 - Completely lower forks or attachments
 - Place the directional control into neutral
 - Ensure all hydraulic controls are in their centered or neutral position
 - Turn the key to "off" position



2 Year / 4000-hour Carriage to Counterweight Warranty

Powertrain Warranty for an additional 12 months and 2,000 hours

Contact your CLARK dealer for more information



TWLi20

Operator Comfort



- Designed around the Li-Ion battery, the TWLi20 provides a spacious operator compartment with increased leg room
- Full-suspension seat with retractable seat belt provides operator comfort over long operational periods
- Fully adjustable armrest with dual joystick operator controls for ease of operation
- Excellent sightlines result from a wide-view-mast and high operator seating position

Performance



- Built around a Li-Ion battery, the TWLi20 maintains a tight turning radius, making it perfect for indoor and narrow aisle applications
- Compact size and rigid structure
- The dual-joystick controls direct the side shifter and fork position through forward, reverse, right and left movements
- The chassis with low center of gravity and wide tires, provides excellent stability

TWLi20



Advanced Componentry



- LCD interactive display with visual and audible warnings and password protected access to advanced truck instrumentation and settings
- Integrated CANbus network communicates between the truck systems, to provide network robustness, error detection and fast network communication
- 48V Dual Drive Motors
- Electro-Hydraulic Power Steering
- Standard CLARK five-year battery warranty to protect your investment

Low Cost of Ownership



- Fully enclosed drive, lift and steer motors leads to less downtime, lower costs and higher ROI
- All-electric braking system has no brake pads to wear or fluids to check or leak
- Less energy consumption and for a longer battery life compared with lead acid batteries
- No battery watering, maintenance, or swapping
- Hydraulic lift components are sealed against dirt and water protecting them from contamination



TWLi20 Specifications

General Information	2	Model	Manufacturer's Designation		TWLi20	
	3	Load Capacity		lbs(kg)	4000 (1814)	
	4	Load Center Distance	Fork Face to Load CG	in(mm)	24 (610)	
	5	Power Unit			Elec - 48V	
	6	Operator Type			Rider-seated	
	7	Tire Type			SE=superelastic	
	Dimensions	8	Upright ¹	Lift height (Preferred Upright) ²	in(mm)	130 (3300)
9			Freelift (Preferred Upright) ²	in(mm)	4.8 (123)	
10		Upright Tilt	Back/Forward	deg.	5 / 6	
11		Fork	Std. Fork Size (T x W x L)	in(mm)	1.6 (40) x 4.8 (122) x 42 (1070)	
12		Carriage	Width of Carriage / Type	in(mm)	41 (1040) / Class II STD	
13		Overall Dimensions	Length to Face of Forks	in(mm)	78.5 (1995)	
14			Width (OAW)	in(mm)	45.3 (1150)	
15			Height, upright lowered ²	in(mm)	79.2 (2012)	
16			Height Upright Extended (With Load Backrest) ²	in(mm)	159.8 (4058)	
17			Height Overhead Guard	in(mm)	83.4 (2118)	
Performance	18	Turning Radius		in(mm)	62.4 (1585)	
	19	Load Center Distance	Center of Drive Axle to Fork Face	in(mm)	16.5 (419)	
		Right Angle Stack:				
	20		For pallets 42" x 48" (1000 x 1200) crossways + 8 in clear	in(mm)	126.9 (3223)	
	21		For pallets 32" x 48" (800 x 1200) crossways + 8 in clear	in(mm)	132.2 (3359)	
	22	Travel Speed	Loaded / Unloaded	mph (kph)	15 / 16	
	23	Lift speed (48V)	Loaded / Unloaded	fpm (mps)	0.35 / 0.43	
	24	Lowering Speed (48V)	Loaded / Unloaded	fpm (mps)	0.45 / 0.37	
	25	Max. Gradeability	Laden/Unladen ³	%	15 / 17	
	26	Service Weight		lbs (kg)	7628 (3460)	
WT	27	Axle Loading	Laden Front / Rear ³	lbs (kg)	10838 (4916) / 1199 (544)	
	28	Axle Loading	Unladen Front / Rear ³	lbs (kg)	3470 (1574) / 4158 (1886)	
	29	Tires	Number, Front / Rear (X= drive wheels)		2X / 2	
	30		Tire Size, Front		200 x 50-10	
	31		Tire Size, Rear		15 x 4.5-8	
	Chassis	32	Wheelbase		in (mm)	53.5 (1358)
		33	Track	Tread, Front	in(mm)	36.9 (936)
		34	Track	Tread, Rear	in (mm)	6.9 (175)
		35	Ground Clearance	Minimum, Loaded Below Upright	in (mm)	5.0 (128)
		36		Center of Wheelbase	in (mm)	4.1 (104)
37		Service Brake	Type		Electromagnetic Braking	
38		Parking Brake	Type		Electromagnetic Braking	
39		Steering	Type		Electronic Hydraulic Assistance	
40		Battery	Battery AH (Max) 48V	AH	360	
41			Battery Weight	lbs (kg)	551 (250)	
Drive Line	42	Motors, Controls	Drive Motor Rating S2 60 min	kW	5.4 x 2	
	43		Lift Motor Rating at S3 15%	kW	11.00	
	44		Drive Motor Control		AC / Inverter	
	45	Sound Level	Driver's Ear According to DIN 12053	db (A)	79	

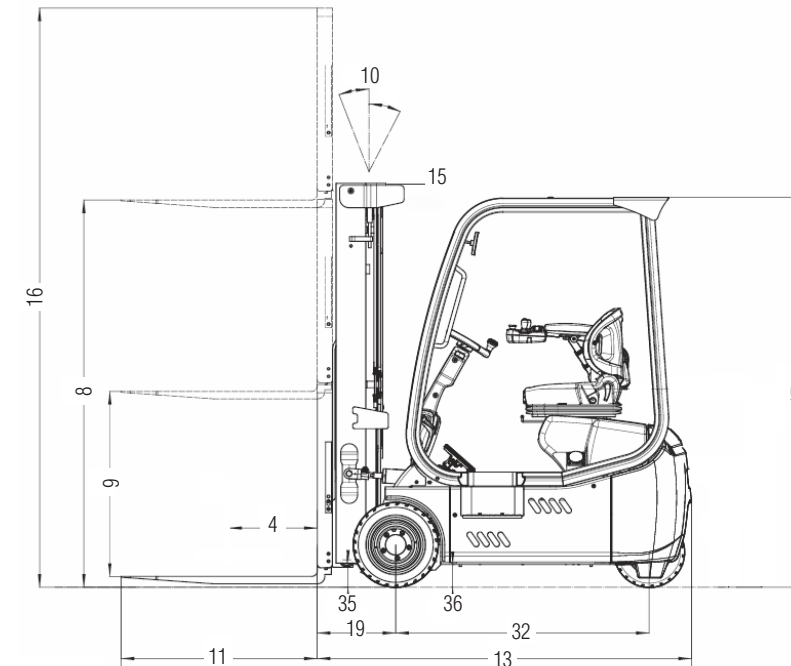
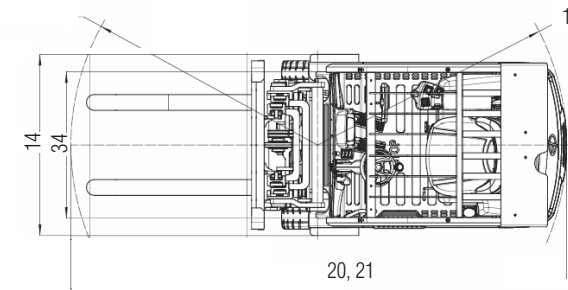
1. Specifications are given with preferred 130" STD upright and minimum battery weight.
 2. Dimensions are for 130" STD uprights.
 3. Specifications are given with preferred 130" STD upright and minimum battery weight.

Upright Table TWLi20

Maximum Fork Height	Overall Height Lowered	Free Lift ¹		Standard Tilt Spec ² B°/F°
		in	mm	
TWLi20 Standard				
130	3302	85.1	2162	4.8 122 5/5

TWLi20 Triple

189	4801	85.3	2167	43.6 1107 4/3
-----	------	------	------	---------------



The CLARK TWLi20 is a great solution for any application including small to large warehouses or docks with narrow aisles.



Owners looking for a long running lift truck with a smaller footprint will find all they need in the CLARK TWLi20!



The TWLi20, with its maintenance-free battery and operator-friendly features, is the perfect solution for trained operators of all experience levels and backgrounds!

Above specs correspond with the TWLi20 Specifications on the page to the left.

ANSI/ITSDF and Insurance Classification

Standard truck meets all applicable mandatory requirements of Part III-ANSI/ITSDF B56.1 Safety Standard for Powered Industrial Trucks and Underwriters Laboratories requirements as to fire hazard only for D and LP classifications. For further information contact a CLARK representative. Users should be aware of, and adhere to, applicable codes and regulations regarding operator training, use, operation and maintenance of powered industrial trucks including: ANSI/ITSDF B56.1; NFPA 505, fire safety standard for powered industrial trucks - type designations, areas of use, maintenance and operation; Occupational Safety and Health Administration (OSHA) regulations that may apply. Contact your authorized CLARK forklift truck dealer for further information including operator training programs and auxiliary visual and audible warning systems, fire extinguishers, etc., as available for specific user applications and requirements. Specifications, equipment, technical data, photos and illustrations are based on information at time of printing and are subject to change without notice. Some products may be shown with optional equipment.



CLARK: The Innovative and Durable Solution

The design, development, and manufacturing capabilities of CLARK, in combination with an unparalleled focus on customer support, a drive to understand fully each customer's needs in order to then supply the right solution, reflect the key essence of what is CLARK.

With over one million CLARK lift trucks sold around the world, each is a testament to the CLARK time-tested process of designing durable trucks with precise features that meet, if not exceed, the material handling needs of our customers. Our full range of dependable products – from pallet jacks to electric narrow aisle order selectors and up to our big 18,000lb capacity lift trucks – assures end-users CLARK has the solutions for their day-to-day needs.



These solutions built from industry innovations, from the nested I-Beam to a self-activating parking brake to new on-board diagnostics, began the same way: with the needs of our customers foremost in mind. By focusing on how we can improve our customers' material handling processes, we can assure our customers a lift truck designed to be the right solution for their needs.

When you bring it all together – an extensive research and development process, state-of-the-art manufacturing capabilities, and a superior dealership network – you have a company dedicated to delivering leading edge products for both today and far into the future. More reasons why CLARK is Built to Last®.

"CLARK, TOTALIFT, Powrworker, PartsPRO Plus, and Built to Last are registered in the U.S Patent and Trademark office. The "Hot Yellow Green" also known as "CLARK Green" is a trademark registered in the U.S Patent and Trademark office."



59-894-2072

CLARK MATERIAL HANDLING COMPANY
North American Headquarters
700 Enterprise Drive • Lexington, KY 40510
866-252-5275 • www.clarkmhc.com

TWL120
59-894-2072 Printed in USA OTP10211500
© 2021 CLARK Material Handling Company